

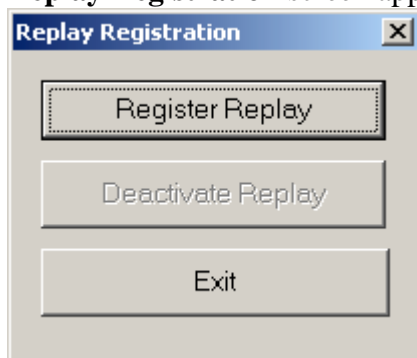
Activating Replay Demo and Upgrading Replay

This document applies to Replay Server.

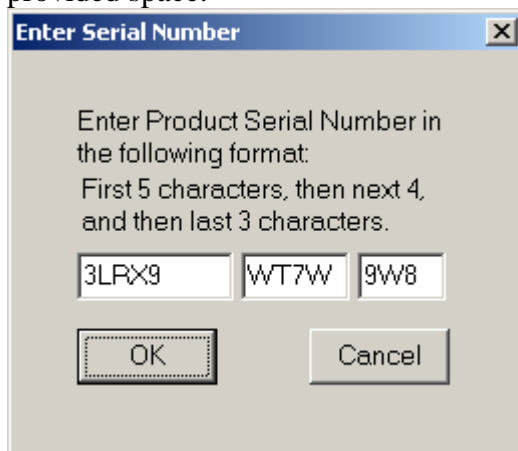
In order to increase Replay number of licenses, or activate Replay DEMO, you need to register Replay with the newly purchased serial number.

At the PC where Replay Server is installed:

1. **Stop Replay Server** service via Component Services.
2. Go to **Start/Programs/Replay/Registration**.
3. **Replay Registration** screen appears.

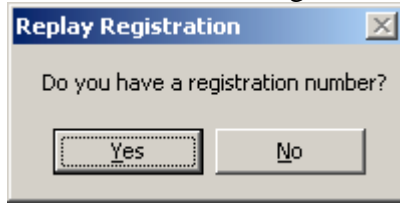


4. Click on the **Register Replay** button.
5. The message "The Serial Number ... is found on this computer...If you wish to change this Serial Number press on NO".
Click on **NO**.
6. The message "If you have a Serial Number..." comes up. Click on **YES**.
7. The **Enter Serial Number** screen appears. Enter the new serial number in the provided space.



8. If the message "The Serial Number ... is registered properly..." appears click on **NO** to overwrite old registration. Otherwise, proceed with point 9.

9. The message asking if you have a registration number comes up. Even though you have not obtained a registration number yet – click on **YES**.



10. The **Enter Registration Number** screen appears.

It displays your software Serial Number and the Computer ID.

At this point you have to obtain a registration number to continue. You'll be asked for both the Serial Number and the Computer ID during this process.

To obtain Trisys registration number over the Internet:

(a) Go to www.trisys.com.

(b) Click on **Register**.

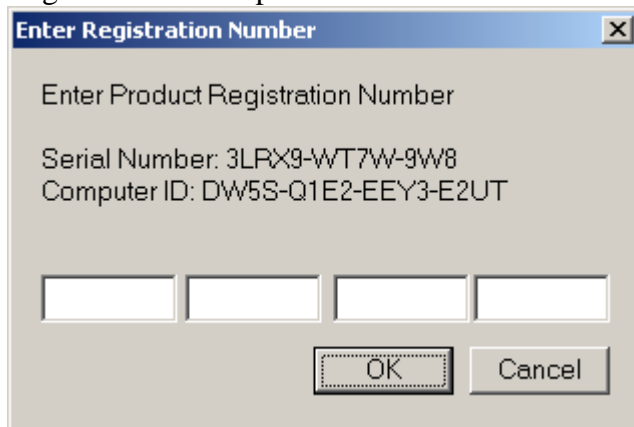
(c) Click on **Replay**.

(d) Follow registration instructions. You will need your serial number and your Computer ID.

If you do not have access to the Internet you can call 973-360-2300 opt 3 for Trisys Tech Support to get a registration number. Please have your Serial number and the Computer ID handy when calling Trisys Tech Support.

11. Once you've obtained a registration number enter it in the provided space on the **Enter Registration Number** screen and click on **OK**.

Registration is completed.



12. **Start Replay Service** using Component Services.