

STARTUP FOR Cisco (TALITY)

SETTING UP TAPIT CDR LOADER FOR ALTIGEN:.....	2
<i>TALITY Setup</i>	2
<i>Monitor Setup</i>	3
<i>CDR Loader Setup</i>	3
APPENDIX A	5
<i>Manual Editing - Setting Up CDR Loader for Single Node (Access and SQL Database)</i>	5

Follow the steps below to install and run TALITY with Altigen system:

1. Install and set up TALITY – see instructions in the TALITY manual or the Readme file.
2. Install CDR Loader from the TAPIT CDR LOADER folder on the Trisys Call Accounting Software CD. See TAPIT CDR Loader Readme file for instructions.
3. Setup CDR Loader - refer to the instructions below.

Setting up TAPIT CDR Loader for Altigen:

Note: The Node data will be stored in the Main location database.

TALITY Setup

1. Open TALITY application (Start/Programs/TALITY/TALITY).
Go to the Controls/System Parameters screen.

System Parameters

Telephone System: CISCO CDM 3.x w/ SQL Server - CDRWM - NXP

Use Date From

Computer
 Phone System

Store Calls

Both
 Outgoing Calls Only
 Incoming Calls Only

Minimum Call Length

(hh : mm : ss)
00 : 00 : 00

Pricing Increments for Custom Pricing and Surcharges

First Minute: 6 Secs
Next Minute: 6 Secs

Additional Parameters

Your Telephone Number: (973)-360-2300
Price Calls Every: 15 Minutes
Default Credit Limit: 50.00
Report Page Length: 60 Lines
Save Archived Calls For: 2 Months

Auto Archive/Optimize Run: [] on [] Day at [] hh : mm
 Show Authorization Code On Reports
 Price Operator Calls
 Surcharge Operator Calls
 Disable V+H Pricing
 Disable Credit Limit Checking
 Separate V+H Long Distance and International Rates
 Do Not Print Zero Cost Calls on Bill
 Still print Bill when Guest/User owes recurring charge ONLY
 Remove Guest/User After Billing (Default)

	Tax	Description
	1: 0.00%	Tax 1
	2: 0.00%	Tax 2
	3: 0.00%	Tax 3

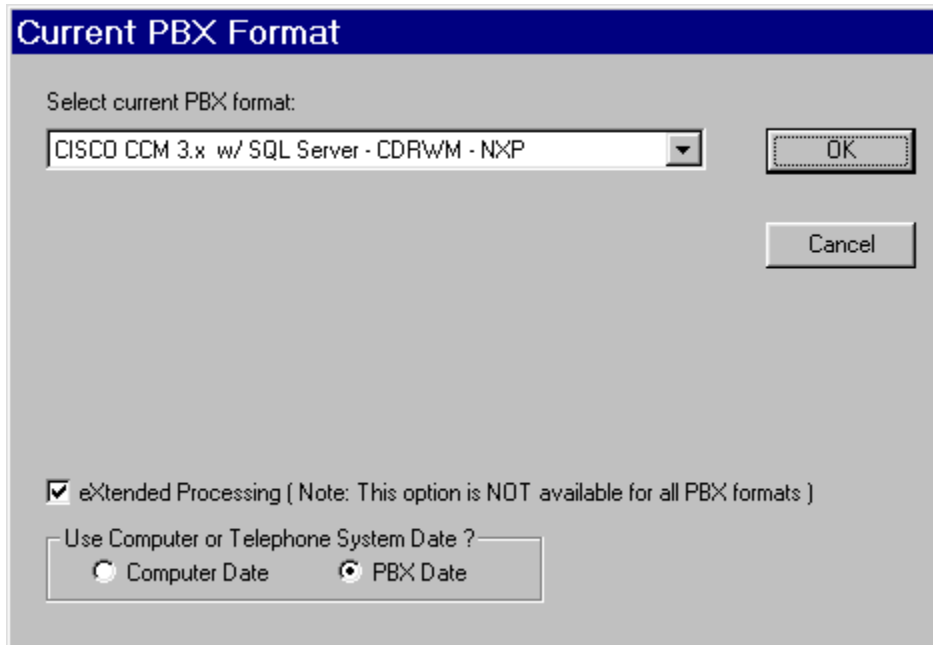
Report Header: []
Report Footer: [] (Bills)

OK Cancel

2. Select the correct option from the **Telephone System** list.
3. Verify the **Use Date From** option. It must be set to **Phone System**.
4. Click on **OK**.
5. Exit TALITY.

Monitor Setup

1. Open **SMDR MONITOR** application (Start/Programs/TALITY/Monitor).
Go to the **PBX/PBX Format** screen.



2. Verify the **Select current PBX format** list selection.
3. Check **eXtended Processing**.
4. Verify the **Use or Telephone System Date?** option. It must be set to **PBX Date**.
5. Click on **OK**.

CDR Loader Setup

1. Open **Tapit CDR Loader** (Start/Tapit CDR Loader/CDR Loader).
The **CDR Loader** screen appears.
2. Click on **Stop Timer**. The name of this button changes to **Start Timer**.
3. Click on **Wizard**. The Wizard will take you step by step through Tapit CDR Loader setup.
4. When the **Wizard** is finished your **TAPIT CDR Loader** screens will resemble the screen below.

Settings for SQL Server database:
(For Access database instructions refer to page 3)

Tapit CDR Loader 1.3.00 - Trisys, Inc.

Wizard Edit

Telephone System
Cisco

Database Driver
{SQL Server}

Server Database Name User Password
sqlserver CDR sqlusername 123456

Calls Table
CallDetailRecord

Database Connection String: Build Now
Driver={SQL Server};Server=sqlserver;Database=CDR;UID=sqlusername;PWD=123456;

Process records every 5 minutes Multi Sites

New records found: 0 New records processed: 0 Last processing started:
Total records processed: 0 Session started: 15:21:05 Fri, 06/27/03

Stopped... Start Timer OK Shut Down

Get Calls Now Show Log File

Note: If you need to adjust settings in future run the Wizard again or edit this screen manually – refer to Appendix A for instruction on manual editing.

APPENDIX A

Manual Editing - Setting Up CDR Loader for Single Node

If you need to adjust the TAPIT CDR Loader screen settings and the wizard outcome is not what you want, you can edit the settings manually.

1. Open **Tapit CDR Loader (Start/Tapit CDR Loader/CDR Loader)**.
The **CDR Loader** screen appears.
2. Click on **Stop Timer**. The name of this button changes to **Start Timer**.
3. Click on **Edit**. The name of this button changes to **Lock/Apply**.
4. If needed make the appropriate changes to the following fields:
Telephone System - select Cisco
Database Driver - must be "{SQL Server}"
Server - enter SQL Server name
Database Name - the default value is **CDR**
User – SQL Server **User Name**
Password – SQL Server **User Password**
Calls Table – the default value is **CallDetailRecord**
5. Click on the **Build Now** button to create the **Database Connection String** entry. This field represents the database connection string with user name and password as shown on the screen above. It is based on the entries in the fields above it. To edit **Database Connection String** value, change the entries above and click on **Build Now**.
Do not modify this field manually.
6. If required, enter new values in **Process record every ___minutes** and **Main Output File** fields. It is recommended to accept defaults.
7. To save changes, click on the **Lock/Apply** button.
8. Click on the **Con4Mon.ini** button. Your default text editor opens the **Con4Mon.ini** file. Copy the following settings into this file.


```
[Multi_S]  
Max_S = 1  
S_001=1,Main_99  
;where S_xxx=Node_id,Loc_name
```
9. Save and close this file.
10. Click on the **Tpremmon.ini** button. Your default text editor opens the **Tpremmon.ini** file. Assuming the file is empty, copy the following settings into this file.

11. [Common]
TapitDir=C:\TALITY
CurrLoc=0
RemTimer=0

[Main_99]
Location=Main
LocActive=1
LocDatPath=C:\TALITY\telmsg.dat

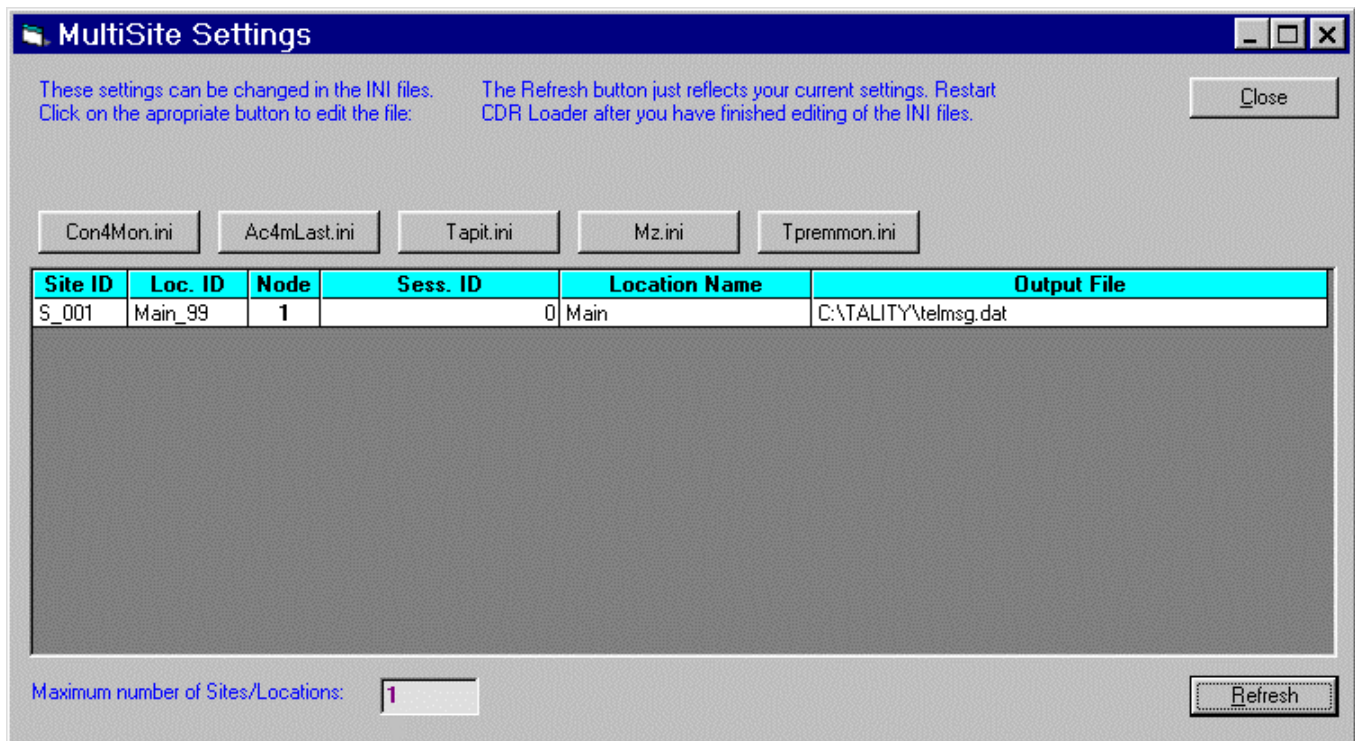
12. Save the Tpremmon.ini file and close it.

13. Click on the **Mz.ini** button. Mz.ini file is displayed in a text editor. Your file should contain the following entries (you can copy and paste the text below):

[TAPIT]
FileProc=1
FileTimer=300
FilePath=C:\tality\telmsg.dat
FileKill=0

14. Save the **Mz.ini** file and close it

15. Click on the **Refresh** button. Your **MultiSite Settings** screen should look like the screen below.



16. Click on the **Close** button.

17. Restart the **SMDR Monitor** application.

18. To test the connection, click on the **Get Calls Now** button. Keep in mind if the **CDR Loader** application is running for the first time **it loads all (!) available call records**.
19. Click on **Start Timer** to turn on the automatic mode.
20. Click on the **OK** button to minimize **CDR Loader**.
21. After **SMDR Monitor** loads call records, run reports to verify the program works fine.

Note: Sample con4mon.ini file is located in the C:\CDR Loader\ini_files folder.

Note: CDR Loader will also create file ac4mlast.ini. This file always will be created automatically in the current Tapit Database folder. Do NOT delete this file.
