

# STARTUP FOR 3COM NBX (TAPIT)

SETTING UP CDR LOADER FOR 3COM NBX: .....	1
<i>TAPIT Setup</i> .....	1
<i>TAPIT CDR Loader Setup</i> .....	2
APPENDIX A .....	3
<i>Manual Editing – Setting Up CDR Loader</i> .....	3

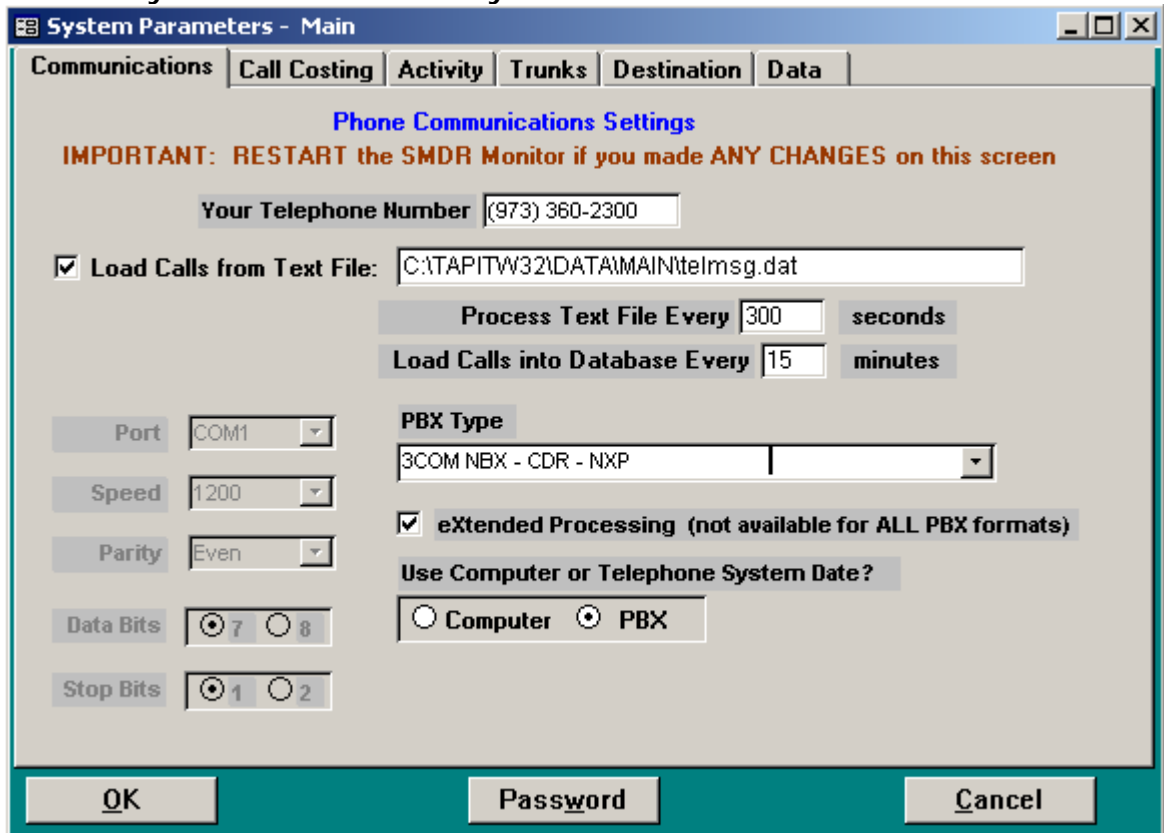
Follow the steps below to install and run TAPIT EX with 3COM NBX system:

1. Install and set up TAPIT EX Multi-User – see instructions in the TAPIT EX manual or the Readme file.
2. Install CDR Loader from the TAPIT CDR LOADER folder on the TAPIT EX CD.  
See TAPIT CDR Loader Readme file for instructions.
3. Setup CDR Loader - refer to the instructions.

## Setting up CDR Loader for 3Com NBX:

### TAPIT Setup

1. Open TAPIT application (Start/Programs/Tapit/Tapit).  
Go to the System Maintenance/System Parameters/Communications screen.



2. Check the Load Calls from Text File box. The default path field (i.e. *C:\TAPITW32\DATA\MAIN\telmsg.dat*) is activated. Accept the default.

3. Verify the **Use Computer or Telephone System Date?** option. It must be set to **PBX**.
4. Check **eXtended Processing** and make sure the correct **PBX Type** is selected.
5. Click on **OK**.
6. Close TAPIT.

## TAPIT CDR Loader Setup

1. Open Tapit CDR Loader (Start/Tapit CDR Loader/CDR Loader).  
The **CDR Loader** screen appears.
2. Click on **Stop Timer**. The name of this button changes to **Start Timer**.
3. Click on **Wizard**. The Wizard will take you step by step through Tapit CDR Loader setup.
4. When the **Wizard** is finished your **TAPIT CDR Loader** screen will resemble the screens below.

Wizard Lock / Apply

To change settings click on the Stop Timer button.

You can change settings using Wizard or directly on the screen:  
 1. To change settings with Wizard click on the Wizard button and follow instructions.  
 2. To edit settings directly on the screen click on the Edit button and follow instructions from the Readme file

To test connection settings click on the Get Calls Now button

Telephone System: 3Com NBX

Database Driver: {Text File (\*.txt)}

Server	Database Name	User	Password
http://34.175.66.56	/htfs0/billing.txt	billing	35465768

Data File Name: C:\TAPITW32\DATA\MAIN\billing.txt Locate

Main Output File: C:\TAPITW32\DATA\MAIN\telmsg.dat Locate

Database Connection String: http://34.175.66.56/htfs0/billing.txt?billing,35465768 Build Now

Process records every  minutes Multi Sites

New records found:     New records processed:     Last processing started:

Total records processed:     Session started:

**Stopped...**    Start Timer    OK    Shut Down    Get Calls Now    Show Log File

**Note: If you need to adjust settings run the Wizard again or edit this screen manually – refer to Appendix A for instruction on manual editing.**

# APPENDIX A

## Manual Editing – Setting Up CDR Loader

1. Open **Tapit CDR Loader (Start/Tapit CDR Loader/CDR Loader)**.  
The **CDR Loader** screen appears.
2. Click on **Stop Timer**. The name of this button changes to **Start Timer**.
3. Click on **Edit**. The name of this button changes to **Lock/Apply**.
4. Verify existing values on the CDR Loader screen. If needed, make the appropriate changes in the following fields:  
**Telephone System** - select 3Com NBX  
**Database Driver** - must be "{Text File (\*.txt)}"  
**Server** - enter Web Server name or IP Address  
**Database Name** - enter the path to the data file on the server. **Default** value is */htfs0/billing.txt*.  
**User** - enter 3Com NBX **Billing User Name**. **Default** value is *billing*.  
**Password** - enter 3Com NBX **Billing User Password**.  
  
**Note:** You can access billing user name and password screen via 3 COM NBX system Web interface.  
Log in to the Web based interface with the **administrator** password. Click on **Tab To It** icon.  
In the **System Configuration** row click on **Security** and then on the **Reporting Password** tab.  
Enter the **administrator** password to get access to the billing user name and password screen.  
By default the billing user name is *billing*.  
The billing password is hidden therefore cannot be verified. However, if you are not sure what it is you can set up new password and use it in CDR Loader.  
  
**Data File Name** – enter the **default** value, *C:\TapitW32\DATA\MAIN\billing.txt*, for the path to the data file in the TAPIT database folder.  
**Main Output File** - enter the **default** value, *C:\TapitW32\DATA\MAIN\telmsg.dat*, for the path to the main output file in the TAPIT database folder.
5. Click on the **Build Now** button to create the **Database Connection String** entry. This field represents the URL with billing user name and password as shown on the screen above. It is created based on the entries in the fields above it. To edit **Database Connection String** value, change the entries above and click on **Build Now**.  
**Do not modify this field manually.**
6. If required, enter new value in **Process record every** \_\_\_ minutes .
7. To save changes, click on the **Lock/Apply** button.
8. Click on the **Multi Sites** button. The **MultiSite Settings** screen appears. If this is a new installation this screen is empty.
9. Click on the **Con4Mon.ini** button. Your default text editor opens the **Con4Mon.ini** file. Copy the following settings into this file.

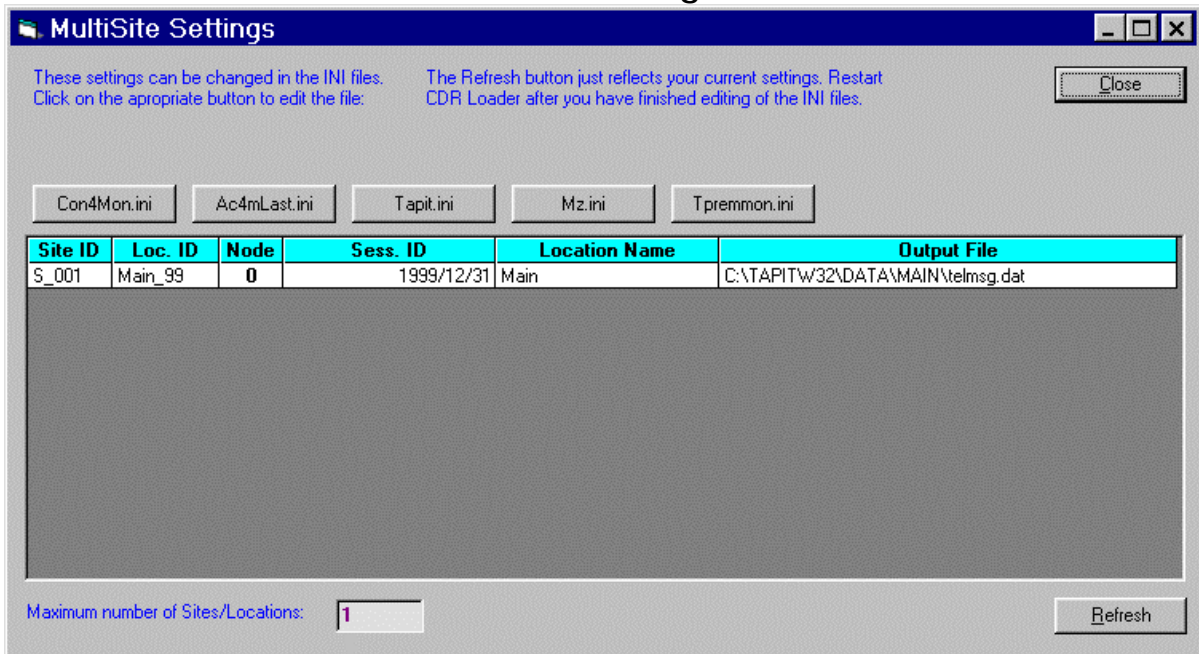
```
[Multi_S]
Max_S = 1
S_001=0,Main_99
;where S_xxx=Node_id,Loc_name
```

10. Save and close this file.
11. Click on the **Tpremmon.ini** button. Your default text editor opens the **Tpremmon.ini** file. Assuming the file is empty copy the following settings into this file.

```
[Common]
TapitDir=C:\TAPITW32\DATA\MAIN
CurrLoc=0
RemTimer=0
```

```
[Main_99]
Location=Main
LocActive=1
LocDatPath=C:\TAPITW32\DATA\MAIN\telmsg.dat
```

12. Save the **Tpremmon.ini** file and close it.
13. Click on the **Refresh** button. Your **MultiSite Settings** screen should look like the screen below.



14. Click on the **Close** button.
15. Restart the **SMDR Monitor** application.
16. To test the connection, click on the **Get Calls Now** button. Keep in mind if the **CDR Loader** application is running for the first time it loads all (!) available call records.
17. Click on **Start Timer** to turn on the automatic mode.
18. Click on the **OK** button to minimize **CDR Loader**.

19. After **SMDR Monitor** loads call records, run reports to verify the program works fine.

---

**Note: Sample con4mon.ini file is located in the C:\CDR Loader\ini\_files folder.**

**Note: CDR Loader will also create file ac4mlast.ini. This file always will be created automatically in the current Tapit Database folder. Do NOT delete this file.**

---