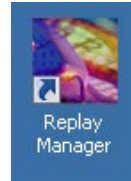
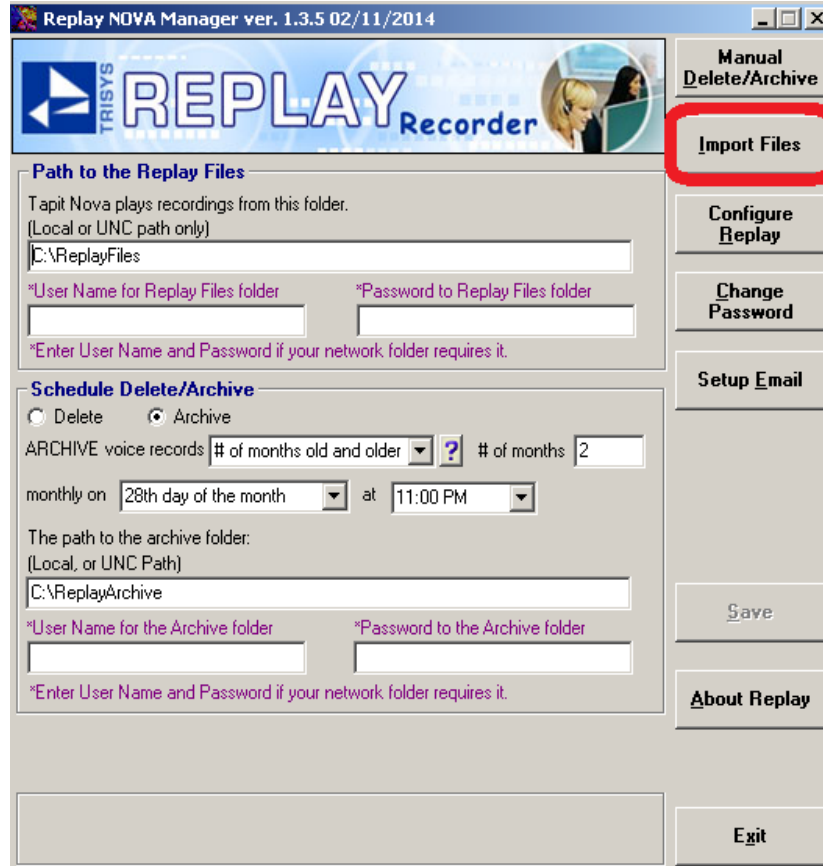


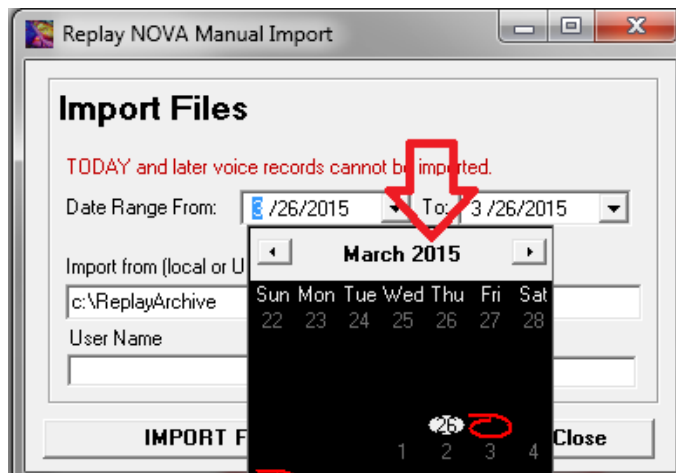
1. Start → Programs → ReplayNOVA → Replay Manager



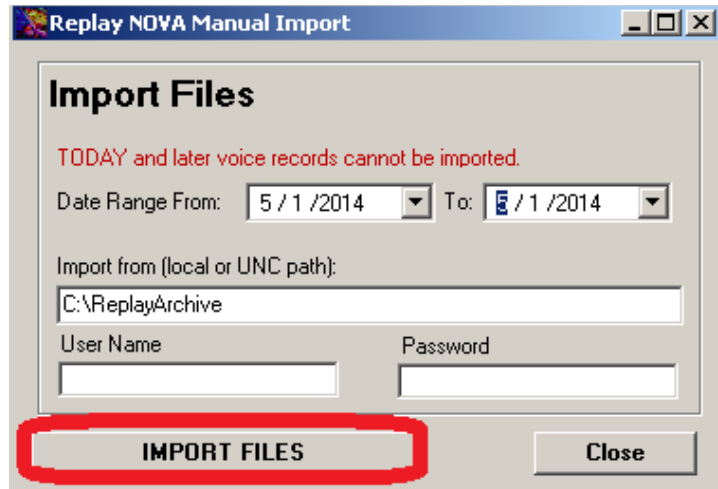
Default Password: **trisy123**



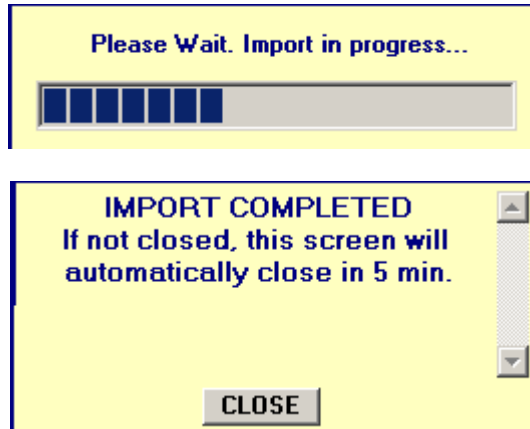
2. Click **Import Files**



3. Enter a date or date range, click on the year to change to a different year.



4. Click **Import Files**.



5. Click **Close**. The recordings for the date specified can now be found in TapitNOVA. In this example it was for May 1st.

Note: The smallest increment that can be imported is an entire day.

Trisys Inc.
187 Columbia Turnpike
Suite 484
Florham Park, NJ 07932

www.trisys.com

Phone: 973-360-2300
Fax: 973-360-2222
Email: general@trisys.com