

## Table of Contents

<b>SETTING UP CDR LOADER FOR 3COM NBX</b>	<b>1</b>
<i>Tapit Setup</i>	<i>1</i>
<i>Tapit CDR Loader Setup</i>	<i>2</i>
<b>APPENDIX A</b>	<b>3</b>
<i>Manual Editing – Setting Up CDR Loader</i>	<i>3</i>

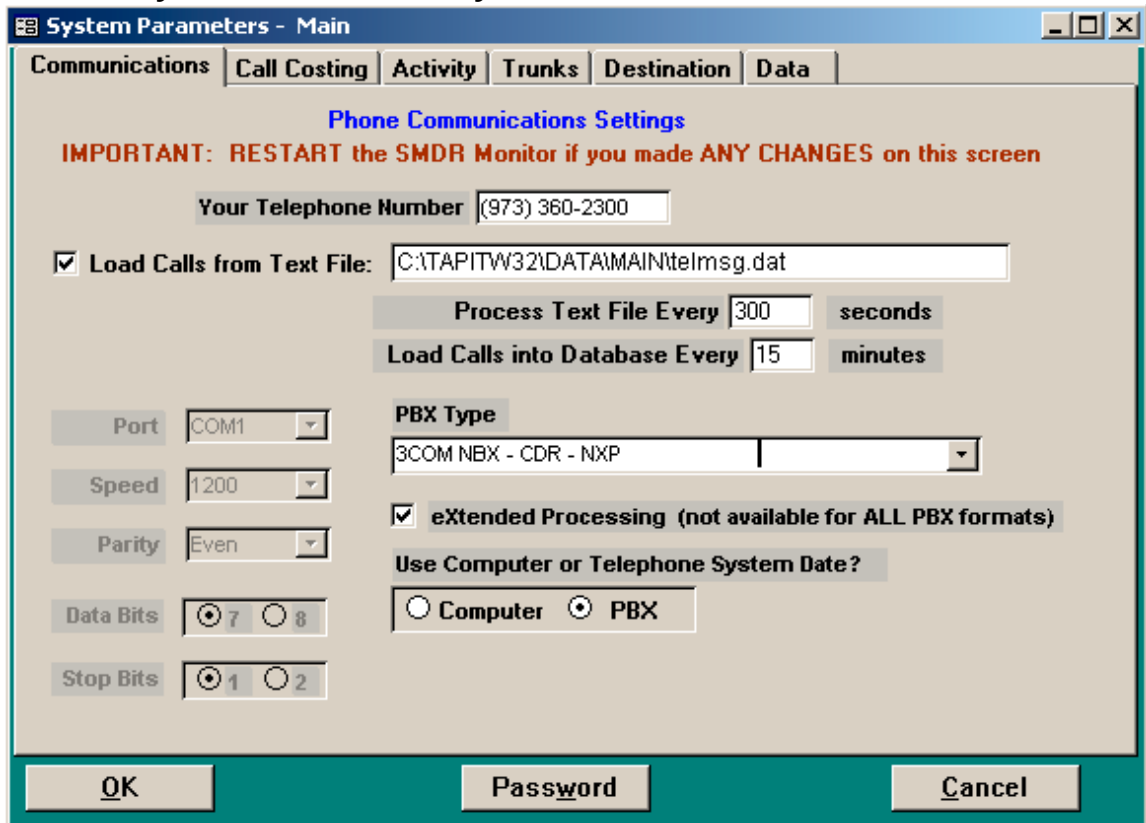
### Follow the steps below to install and run TapitEX with 3COM NBX System:

1. Install and set up TapitEx Multi-User – see instructions in the TapitEX manual or the Readme file.
2. Install CDR Loader from the Tapit CDR Loader folder on the TapitEX CD. See Tapit CDR Loader Readme file for instructions.
3. Setup CDR Loader – refer to the instructions.

## Setting up CDR Loader for 3COM NBX

### Tapit Setup

1. Open **Tapit** application (**Start/Programs/Tapit/Tapit**). Go to the **System Maintenance/System Parameters/Communications** screen.



**System Parameters - Main**

Communications | Call Costing | Activity | Trunks | Destination | Data

**Phone Communications Settings**

**IMPORTANT: RESTART the SMDR Monitor if you made ANY CHANGES on this screen**

Your Telephone Number: (973) 360-2300

Load Calls from Text File: C:\TAPITW32\DATA\MAIN\telmsg.dat

Process Text File Every: 300 seconds

Load Calls into Database Every: 15 minutes

Port: COM1

Speed: 1200

Parity: Even

Data Bits:  7  8

Stop Bits:  1  2

PBX Type: 3COM NBX - CDR - NXP

eXtended Processing (not available for ALL PBX formats)

Use Computer or Telephone System Date?

Computer  PBX

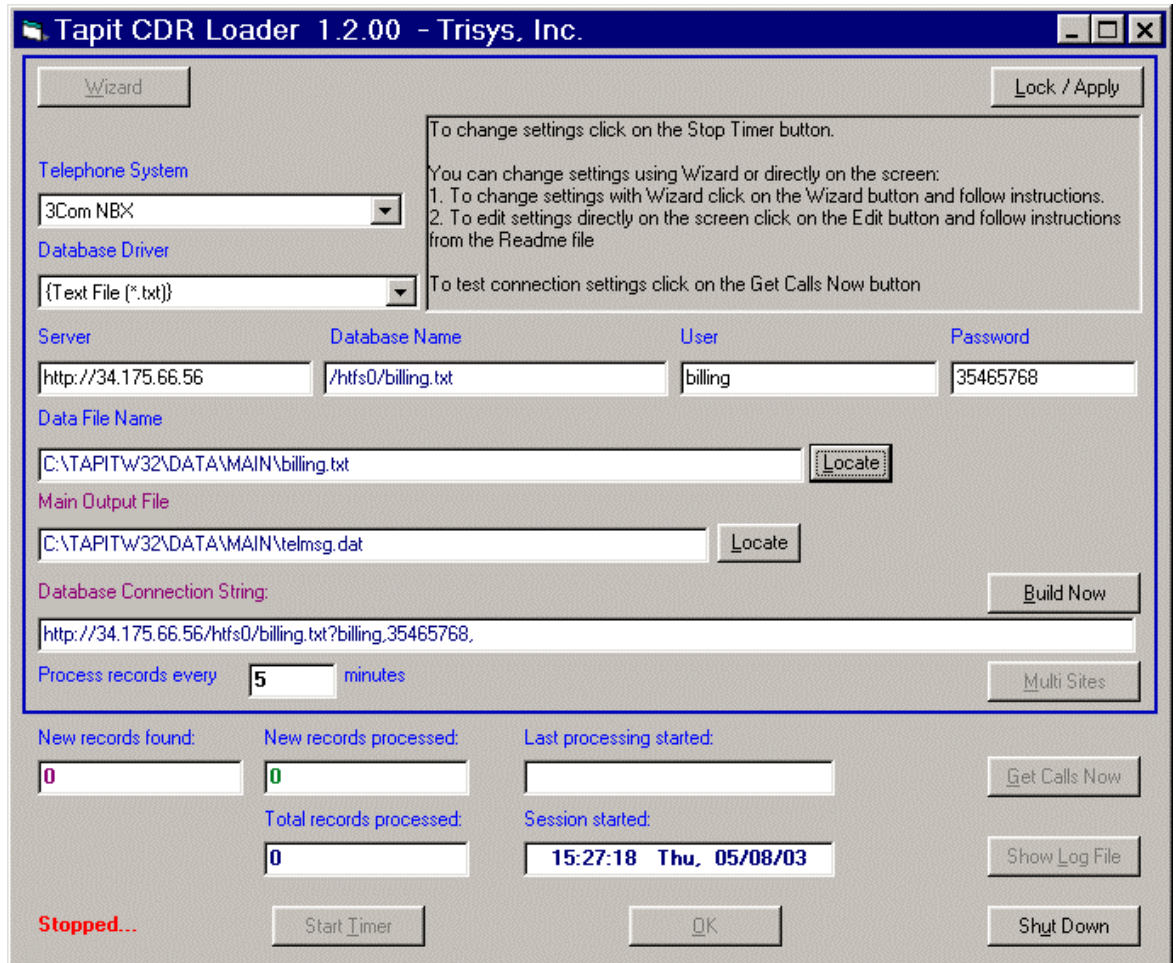
OK Password Cancel

## Tapit CDR Loader Start-Up file for 3COM NBX

2. Check the **Load Calls** from **Text File** box. The default path field (i.e. *C:\TAPITW32\DATA\MAIN\telmsg.dat*) is activated. Accept the default.
3. Verify the **Use Computer or Telephone System Date** option. It must be set to **PBX**.
4. Check **eXtended Processing** and make sure the correct **PBX Type** is selected.
5. Click on **OK**.
6. Close Tapit.

### Tapit CDR Loader Setup

1. Open **Tapit CDR Loader (Start/Tapit CDR Loader/CDR Loader)**. The **CDR Loader** screen appears.
2. Click on **Stop Timer**. The name of this button changes to **Start Timer**.
3. Click on **Wizard**. The Wizard will take you step by step through Tapit CDR Loader setup.
4. When the **Wizard** is finished your **TAPIT CDR Loader** screen will resemble the screen below.



The screenshot shows the 'Tapit CDR Loader 1.2.00 - Trisys, Inc.' window. The 'Wizard' button is active. The configuration fields are as follows:

- Telephone System:** 3Com NBX
- Database Driver:** {Text File (\*.txt)}
- Server:** http://34.175.66.56
- Database Name:** /htfs0/billing.txt
- User:** billing
- Password:** 35465768
- Data File Name:** C:\TAPITW32\DATA\MAIN\billing.txt
- Main Output File:** C:\TAPITW32\DATA\MAIN\telmsg.dat
- Database Connection String:** http://34.175.66.56/htfs0/billing.txt?billing\_35465768
- Process records every:** 5 minutes
- Statistics:**
  - New records found: 0
  - New records processed: 0
  - Total records processed: 0
  - Last processing started: (empty)
  - Session started: 15:27:18 Thu, 05/08/03

Buttons include 'Wizard', 'Lock / Apply', 'Locate', 'Build Now', 'Multi Sites', 'Get Calls Now', 'Show Log File', 'Shut Down', 'Start Timer', and 'OK'. A status bar at the bottom left shows 'Stopped...'.

**Note: If you need to adjust settings, run the Wizard again or edit this screen manually - refer to Appendix A for instructions on manual editing.**

## Appendix A

### Manual Editing – Setting Up CDR Loader

1. Open **Tapit CDR Loader (Start/Tapit CDR Loader/CDR Loader)**.  
The **CDR Loader** screen appears.
2. Click on **Stop Timer**. The name of this button changes to **Start Timer**.
3. Click on **Edit**. The name of this button changes to **Lock/Apply**.
4. Verify existing values on the CDR Loader screen. If needed, make the appropriate changes in the following fields:

**Telephone System** - select 3Com NBX

**Database Driver** - must be "{Text File (\*.txt)}"

**Server** - enter Web Server name or IP Address

**Database Name** - enter the path to the data file on the server. **Default** value is */htfs0/billing.txt*.

**User** - enter 3Com NBX **Billing User Name**. **Default** value is *billing*.

**Password** - enter 3Com NBX **Billing User Password**.

**Note:** You can access billing user name and password screen via 3COM NBX system Web interface.

Log in to the Web based interface with the **administrator** password. Click on **Tab To It** icon. In the **System Configuration** row, click on **Security** tab and then on the **Reporting Password** tab. Enter the **administrator** password to get access to the billing user name and password screen. By default the billing user name is *billing*. The billing password is hidden therefore cannot be verified. However, if you are not sure what it is, you can set up new password and use it in CDR Loader.

**Data File Name** - enter the **default** value, *C:\TapitW32\DATA\MAIN\billing.txt*, for the path to the data file in the TAPIT database folder.

**Main Output File** - enter the **default** value, *C:\TapitW32\DATA\MAIN\telmsg.dat*, for the path to the main output file in the TAPIT database folder.

5. Click on the **Build Now** button to create the **Database Connection String** entry. This field represents the URL with billing user name and password as shown on the screen above. It is created based on the entries in the fields above it. To edit the **Database Connection String** value, change the entries and click **Build Now**.  
**Do not modify this field manually.**
6. If required, enter new value in **Process record every \_\_\_ minutes**.
7. To save changes, click on the **Lock/Apply** button.
8. Click on the **Multi Sites** button. The **MultiSite Settings** screen appears. If this is a new installation this screen is empty.
9. Click on the **Con4Mon.ini** button. Your default text editor opens the **Con4Mon.ini** file. Copy the following settings into this file.

# Tapit CDR Loader Start-Up file for 3COM NBX

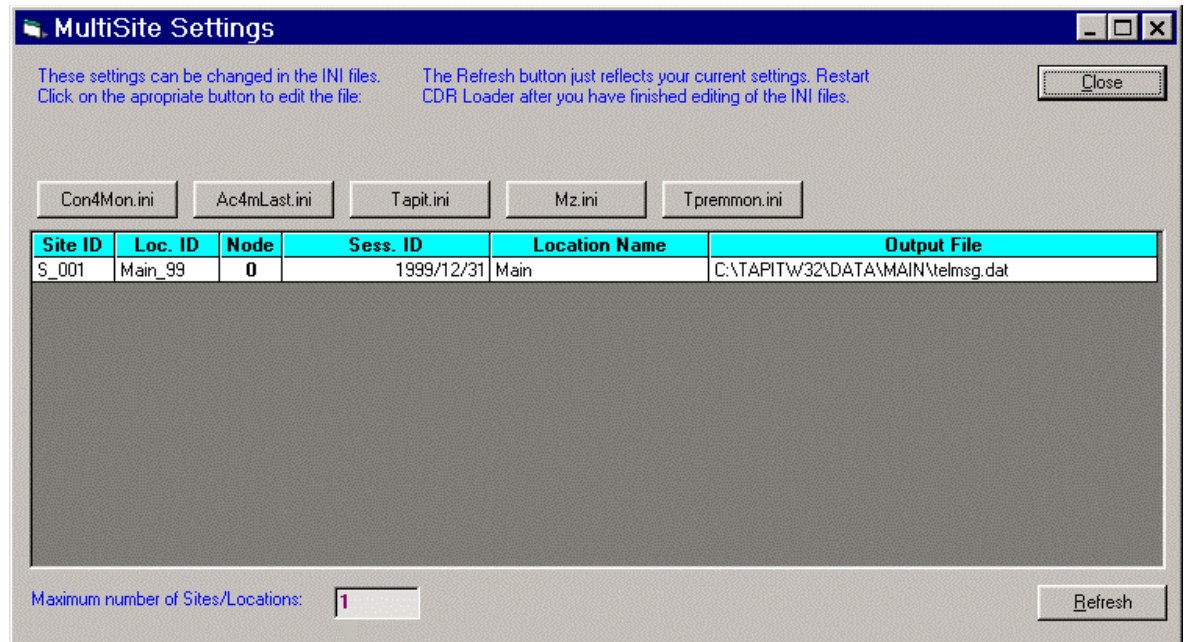
```
[Multi_S]
Max_S = 1
S_001=0,Main_99
;where S_xxx=Node_id,Loc_name
```

10. Save and close this file.
11. Click on the **Tpremmon.ini** button. Your default text editor opens the **Tpremmon.ini** file. Assuming the file is empty, copy the following settings into this file.

```
[Common]
TapitDir=C:\TAPITW32\DATA\MAIN
CurrLoc=0
RemTimer=0

[Main_99]
Location=Main
LocActive=1
LocDatPath=C:\TAPITW32\DATA\MAIN\telmsg.dat
```

12. Save the **Tpremmon.ini** file and close it.
13. Click on the **Refresh** button. Your **MultiSite Settings** screen should look like the screen below.



14. Click on the **Close** button.
15. Restart the **SMDR Monitor** application.
16. To test the connection, click on the **Get Calls Now** button. Keep in mind if the **CDR Loader** application is running for the first time **it loads all (!) available call records**.
17. Click on **Start Timer** to turn on the automatic mode.
18. Click on the **OK** button to minimize **CDR Loader**.

## Tapit CDR Loader Start-Up file for 3COM NBX

19. After **SMDR Monitor** loads call records, run reports to verify the program works fine.

---

**Note: Sample con4mon.ini file is located in the C:\CDR Loader\ini\_files folder.**

**Note: CDR Loader will also create file ac4mlast.ini. This file always will be created automatically in the current Tapit Database folder. Do NOT delete this file.**

---



TRISYS INC.

## Tapit CDR Loader Start-Up file for 3COM NBX

---

Trisys Inc.  
215 Ridgedale Avenue  
Florham Park, NJ 07932

[www.trisys.com](http://www.trisys.com)

Phone: 973-360-2300  
Fax: 973-360-2222  
Email: [general@trisys.com](mailto:general@trisys.com)