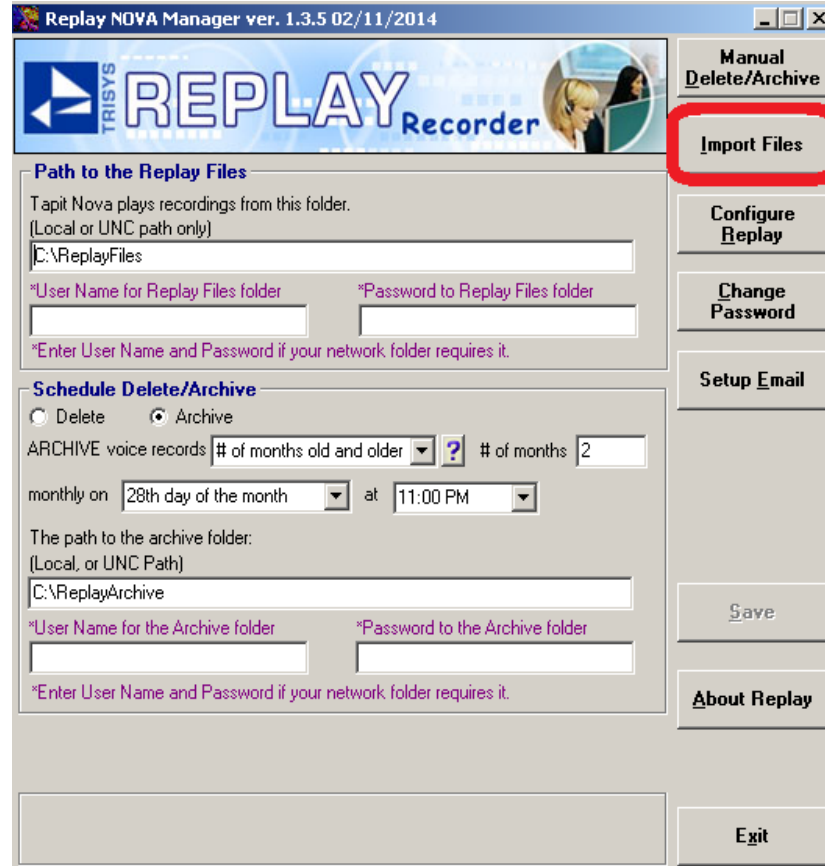


# To Import Recordings in Replay

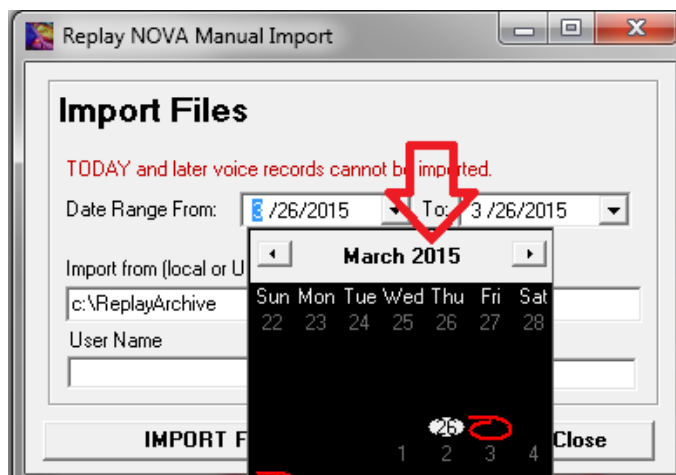
1. Start → Programs → ReplayNOVA → Replay Manager



Default Password: **trisy123**

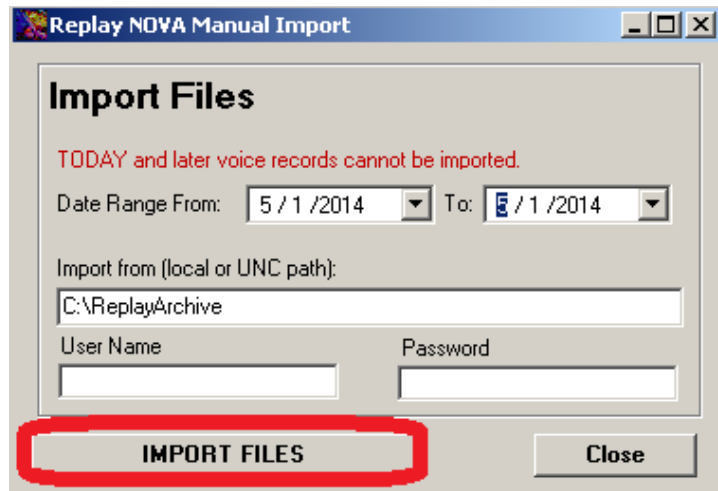


2. Click **Import Files**

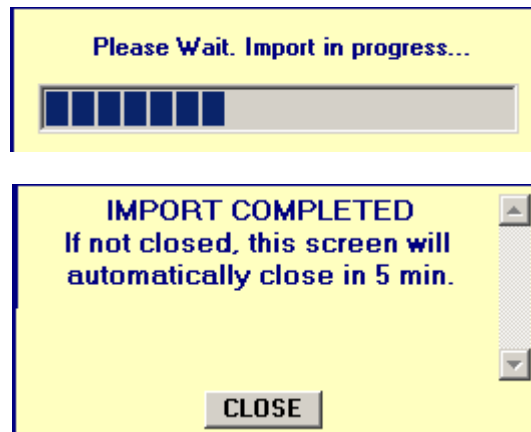


## To Import Recordings in Replay

3. Enter a date or date range, click on the year to change to a different year.



4. Click **Import Files**.



5. Click **Close**. The recordings for the date specified can now be found in TapitNOVA. In this example it was for May 1<sup>st</sup>.

**Note:** The smallest increment that can be imported is an entire day.



TRISYS INC.

## To Import Recordings in Replay

---

Trisys Inc.  
215 Ridgedale Avenue  
Florham Park, NJ 07932

[www.trisys.com](http://www.trisys.com)

Phone: 973-360-2300  
Fax: 973-360-2222  
Email: [general@trisys.com](mailto:general@trisys.com)